

A NOTE FROM THE CHAIR

Hello everyone

I hope you are all well. At our AGM in April, we bid fond farewells to our outgoing President, Pat Armstrong and Vice president Maureen Hanman.

Hilary McFarland paid tribute to Pat and said that she had joined the society in 1987, and later served as FAS Chair until 2007 when she became Vice-president to Angela Yeoman and then became President herself. She has always been involved with the committee in various roles and regularly attended workshops, where she was invariably open to new ideas and techniques. Pat always made excellent speeches and supported all aspects of the Society.

Then it was my turn to talk about Maureen's excellent contribution to the Society. Maureen was a founder member of the Society, having been present at the first meeting at Charles and Vera Appleyard's house in 1979, to discuss the formation of the first art society of Frome and helped with setting up the Society with Charles and Vera, and the art teacher Charles Hopkins, who held evening classes at the old college in Park Road. She has always been involved with the committee in various roles and regularly attended workshops, as she has always been open to new ideas and techniques.

I am sure you will all join me in offering them our best wishes for the future.

I would also like to let you know that there have been some changes to our committee.

We are very grateful that Averil Morrow has agreed to become Hon. Secretary to replace Hilary McFarland. Many thanks to Averil for filling this vital role.

I would also like to welcome Jessica Wilker and Pam Cartwright to the committee. Jessica will become Exhibitions Secretary and work alongside Averil for the next exhibition. Pam will be assisting Eve, our Membership Secretary, with a view to taking over the role in due course. Welcome, Pam and Jessica, and best wishes to Averil in her new role.

We are still looking for someone to help with newsletters in conjunction with Hayley. More details are below.

As mentioned in our previous newsletter, we would also like to increase membership. Our flyers will be available to pick up during our demos, talks and workshops. It would be very helpful, particularly for those who live in the outlying areas, if you could distribute a few leaflets in your local village halls, cafés, shops etc. We would also be grateful if you could spread the word through social media or encourage your friends who are interested in art to join our number.

Now summer has arrived, I am looking forward to attending some of the outdoor painting days, and I hope we will meet up then.

Alan Overton | Chair, Frome Art Society

SOCIETY NEWS

2023 Subscription

Unfortunately, due to rising costs and a reduction in income, we have reluctantly proposed an increase in next year's subscription to **£20**. This was agreed upon at the recent AGM.

The pandemic restrictions have not helped our finances, and the cost of artist demonstrators and workshop leaders has increased significantly over the last two years. In addition, not having a volunteer to help with newsletter production brings extra cost, so help here would be much appreciated.

On a practical note, if you pay by standing order, please remember to amend the amount before the payment is made at the beginning of January. If you want any help with this, please contact Chris Galpin, email chrisfgalpin@gmail.com.

Newsletter Manager Wanted

We rely on volunteers to maintain Frome Art Society activities and communications.

We need a manager (two people could share this role) for our online newsletters and email notifications. This would involve editorial tasks and the occasional write-up about events at Frome Art Society and elsewhere.

Newsletter content is mainly supplied by the committee and members, and the volunteer/s would work closely with – and be supported by – the FAS committee.

Do step forward – this is an ideal job share with a friend/s or colleague – so please get in touch with us by emailing fromeartsociety@gmail.com

Thank you

EXHIBITIONS 2022

Autumn Exhibition

Round Tower Gallery, Black Swan Arts | Frome October 2022

We are looking forward to our next exhibition in the Round Tower when we will concentrate on small but beautiful with a maximum size of 30cms. This will run from **Saturday 22nd October to Sunday 6th November 2022.**

Look out nearer the time for the online application form and further details.



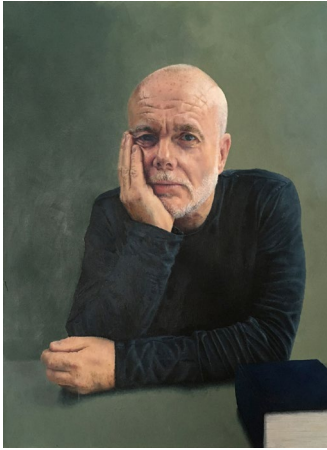
Recently Enjoyed ...

Spring Exhibition at Black Swan Arts | April 2022

We held a successful April exhibition in the Black Swan's Long Gallery with many flattering comments. The Vera Skinner Awards were judged by Sally Ridout from Bruton, who commended the Society on the quality of the exhibits.

The first prize was won by **Melissa Wishart** for *Bananas, Costa Rica* (shown above). The second prize went to Stuart Weightman for his portrait of *Lee Smith*; the third prize was *Hill and Vale* by Sarah Ball. In addition, there were several highly commended works by Wendy Smith, Hilary McFarland, Amy Yates, Hilary Jackson, Camilla Frederick, Gillian Flack and Emma LeLohe (all winner's artworks are shown on the next page).

Spring Exhibition Prize Winners *continued ...*



2nd Prize
Stuart Weightman *Lee Smith*



3rd Prize
Sarah Ball *Hill and Vale*

Highly Commended



Wendy Smith
The Breaker



Hilary McFarland
Birthday Roses



Amy Yates
Mousehole



Hilary Jackson
Clematis in Bloom



Camilla Frederick
Shades of Grey



Gillian Flack
Spanish Jug



Emma LeLohe
Shell Like



Sarah Ball
Cape Cornwall

TALK



Zoom Talk

‘Contemporary Art’ by JOEL WAREING

Thursday 15 September 2022 | 7.30 to 9.30 pm

Zoom details will be sent out via email before the event.

Joel Wareing is an art teacher based in Surrey. His subjects are local scenes and informal groups of people, gleaned from sketches and photographs and translated into the atmospheric painted images.

joelwareing.co.uk

DEMONSTRATION



Zoom Demo

‘Pen and Wash Techniques’ by PAULINE HAZELWOOD

Thursday 20 October 2022 | 2.30 to 4.30 pm

Zoom details will be sent out via email before the event.

Pauline has multi-faceted talents, including Illustration, portraits and landscapes, plus rail and aviation painting. An associate member of the Guild of Railway Artists, writer and publisher, including the Saddletank books for children. Pauline studied at the Central School of Art and Design and has exhibited at The National Portrait Gallery, Royal Society of British Artists and much more.

www.paulinehazelwood.com

DEMONSTRATION



Frome Cricket Club

‘Still Life in Oils’ by MAX HALE

Thursday 17 November 2022 | 2.30 to 4.30 pm

Max got a Fine Arts Degree from the Harrow School of Art. Initially working in Graphics for magazine publishing, he followed his fine art beginnings and produced watercolour landscapes, progressively becoming looser in his style and more expressive in painting various subjects. He has lived in Wiltshire since 2008, teaching, writing articles for magazines and reviewing art materials.

www.maxhaleart.co.uk

WORKSHOP



Trudoxhill Village Hall

'From Painting to Collage' with MAUREEN NATHAN

Monday 5 September 2022 | 10am to 4pm | £40pp

Please book your place using our online booking form link via the FAS emails.

In this workshop with Maureen Nathan, we will be using traditional paintings as an inspiration and starting point for collage making. Working from selected paintings, we will break them down into shapes and forms. Then, using colours or monochrome, we can explore elements of design and composition to make collages. We can explore collage as far as we can take it, including reinterpreting it into drawings or paintings.

Maureen is an art educator and professional artist showing work primarily in London and Dorset.

www.maureennathan.com | [instagram@maureen_a_nathan](https://www.instagram.com/maureen_a_nathan) | [facebook@maureen.nathan](https://www.facebook.com/maureen.nathan)

Workshops are held at Trudoxhill Village Hall BA11 5DG. Tea and coffee will be provided, but please bring your own lunch. Please also bring a protective covering for your work table. It would be helpful if you could arrive 15 minutes early to allow time to set up.

Numbers will be limited, and you are advised to book early to reserve your place.

A full list of materials to bring will be sent to you after booking.

WORKSHOP



Trudoxhill Village Hall

‘A to Z of Golden Acrylics’ with SORAYA FRENCH

Wednesday 19 October 2022 | 10.30 to 3.30pm | £40pp

Please book your place using our online booking form link via the FAS emails.

In the morning, Soraya will guide us through the techniques and possibilities available using modern acrylic paints and pigments and how this relates to clean colour mixing and glazing. We will also examine the use of gels, grounds and mediums to change the texture and create sculptural effects. Samples are provided for everyone to experiment with. After a short lunch break, Soraya will demo one of her lively, colourful landscapes and then we will have the opportunity to paint our own.

Soraya is a past president of the Society for Women Artists, a professional painter and author of several popular acrylic painting guides.

www.sorayafrench.com

Workshops are held at Trudoxhill Village Hall BA11 5DG and generally run between 10 and 4. The October workshop runs from 10.30 until 3.30. Tea and coffee will be provided, but please bring your own lunch. Please also bring a protective covering for your work table. It would be helpful if you could arrive 15 minutes early to allow time to set up.

Numbers will be limited, and you are advised to book early to reserve your place.

A full list of materials to bring will be sent to you after booking.

WORKSHOP



Trudoxhill Village Hall

‘Colour - Let’s Play with Fruit’ with Melissa Wishart

Wednesday 16 November 2022 | 10am to 4pm | £40pp

Please book your place using our online booking form link via the FAS emails.

We consider ‘What does it mean to be a ‘colourist’? As the days get darker in November, this is a playful, relaxing painting workshop to discover further facets of colour in your work and is open to both figurative and abstract painters.

We will be moving towards semi-abstraction in a guided way and will experiment with colour, seeking out surprising combinations, the joys of limited palettes, harmony, use of coloured grounds and mid-tones. We will also try out optical mixing and juxtapositions and become more aware of how colour affects emotion, mood and the optic nerves!

Still life (fruit and vegetables) will be provided on the day if you like working directly from a subject. Also, bring in landscape sketches, and we can simplify their forms as we move towards semi-abstraction. The day will be interspersed with short presentations for discussion, looking at the subject of colour and how other artists have used this aspect in their work.

Melissa is a member of the Frome Art Society and a recent award winner at the Frome Art Society exhibition in Black Swan Arts.

www.melissawishart.com | [instagram@wishart.melissa](https://www.instagram.com/wishart.melissa)

Workshops are held at Trudoxhill Village Hall BA11 5DG. Tea and coffee will be provided, but please bring your own lunch. Please also bring a protective covering for your work table. It would be helpful if you could arrive 15 minutes early to allow time to set up. A full list of materials to bring will be sent to you after booking.

Numbers will be limited, and you are advised to book early to reserve your place.

OUTDOOR PAINTING 2022



Fridays and Wednesdays | 10am to 4pm

These arrangements are for members only (no guests or dogs, please). Come and go as you please between 10am and 4pm—toilet facilities at all venues. Please be prepared to contribute to the host's charity and observe the host's Covid requirements where asked.

View all the listings of venues with directions on our FAS Painting & Sketching Schedule 2022. Download link via digital Newsletters.

Tips for Outdoor Painting

Wear warm clothes; layers are best! Take an umbrella; Wear suitable footwear: Wellies in the car. Farmyards can be muddy in summer. Don't forget a hat to keep your head warm/dry and for shade from the sun; gloves too if it is cool when you start. It may get cooler!

Be sparing in your choice of painting materials and equipment. When looking for your perfect subject, they may have to be carried some distance or over rough terrain.

Please have respect for property owners. Don't leave gates open, obstruct workers or cause damage. Take your litter home; leave no trace of your presence.

Do take a flask and some lunch. We usually gather for this at about 12.30. Finally, whilst sunshine can't be guaranteed, you may need sun-block. Enjoy!

Thanks, David

NB OUTDOOR PAINTING DAYS ARE ONLY OPEN TO FAS MEMBERS

